

April 13, 2021

ALWAYS check the tolerance at your bog. A fact sheet showing all spring tolerances is available in the Frost Tolerance Reports section of the Cranberry Station website (under 2020). Access via the Frost Tolerance Report in Quick Links on the Home Page.

Hard copies are available at CCCGA and at the Station.

**Tolerances provided here are determined at Rosebrook bog in Wareham and confirmed at State Bog in East Wareham.**

***For comparison purposes, this year we are including photos from additional locations.***

- On April 13, at Rosebrook and at State Bog, white bud stage was seen on all varieties. Note that Ben Lear buds retain a reddish coloration well into the spring but lighten in the transition from dormant to 'white bud' stage.
- White bud tolerance for Early Black and Howes is 20°F.  
White bud tolerance is 22°F for Ben Lear, Stevens, and newer hybrids.
- Currently, degree day models indicate remaining at spring dormant stage; weather this past week has been cooler than previously predicted. **However, observations in the field showed significant white bud and tolerance was assigned accordingly.**
- Bud closeups by Peter Jeranyama, UMass Cranberry Station; Rochester and Plympton photos by Erika Saalau Rojas, Ocean Spray; Rosebrook iPhone photos by Carolyn DeMoranville.
- Next check is scheduled for April 20<sup>th</sup>.



Stevens, Rosebrook 4.13.21  
White bud stage, tolerance 22°F



Ben Lear, Rosebrook 4.13.21  
White bud stage, tolerance 22°F



Early Black, Rosebrook 4.13.21  
White bud stage, tolerance 20°F



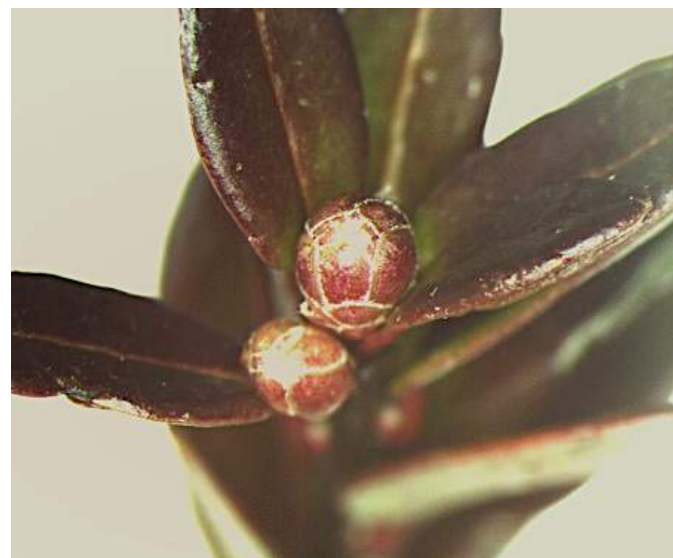
Howes, Rosebrook 4.13.21  
White bud stage, tolerance 20°F

Bud photos, State Bog April 13, 2021



Early Black  
20° F

Howes  
18° F

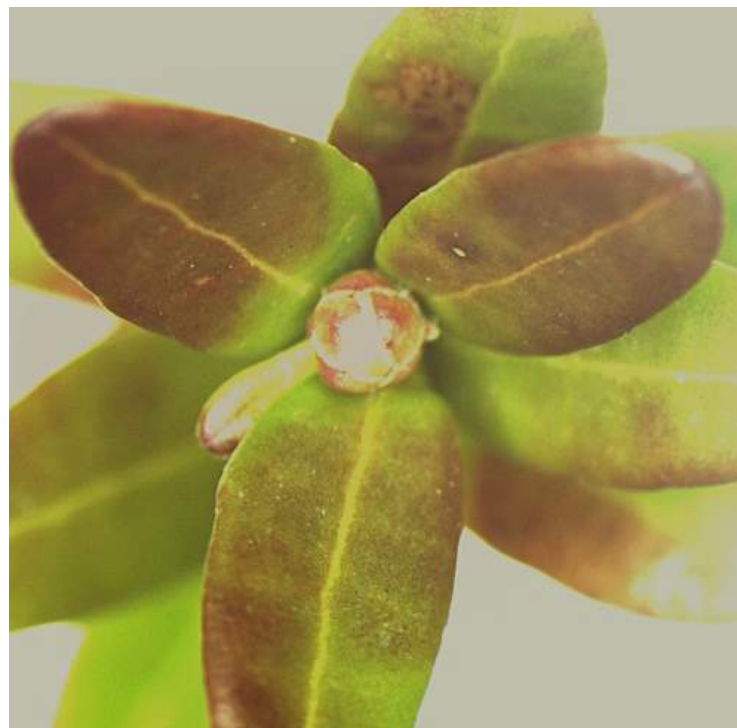


Bud photos, State Bog April 13, 2021

Stevens  
22°F



Ben Lear  
22°F



Bud photos, State Bog April 13, 2021

Crimson Queen  
22°F



Mullica Queen  
22°F



Demoranville  
22°F





'Stevens'  
Rochester, MA  
4.12.2021



'DeMoranville'  
Rochester, MA  
4.12.2021



'Stevens'  
Plympton, MA  
4.12.2021



'Ben Lear'  
Plympton, MA  
4.12.2021

